



UCLA CENTER FOR THE STUDY OF WOMEN

CSW

research that rethinks

annual report
2016-2017

FROM THE DIRECTOR



AS I COMPLETE my second year as Director, I am proud of CSW's role in enhancing UCLA's reputation as an intellectual hub for researchers working in the fields of gender and sexuality. CSW continues to impact gender studies through original scholarly projects, event programming, publications, direct funding to faculty and student researchers, and consultations on campus climate. To further broaden our networks, we have established essential and robust relationships with academic partners, community activists, and donors.

This year, CSW advanced three key research initiatives:

- 1. Chemical Entanglements: Gender and Exposure** – a project that investigates how people of all genders are exposed to toxic chemicals everyday, with stark consequences for our health
- 2. Food | Water | Shelter** – an investigation of how gender shapes people's relationships to these basic necessities
- 3. Feminism and the Senses** – a series of public talks highlighting how the senses are key sources of information about gender inequality in everyday life.

Despite limited funding, CSW continues to offer our events and programs at no cost to the general public, which allows us to engage and involve the community in these research projects. As we build on our accomplishments and initiate innovative and timely research on gender, I urge you to consider supporting CSW through a financial contribution, large or small. By asking and answering key questions about gender and inequality, we aim to improve lives and educate the next generation.

A handwritten signature in black ink, appearing to read 'Rachel C. Lee'.

Thank you for supporting CSW!
Rachel C. Lee, Director
UCLA Center for the Study of Women



TABLE OF CONTENTS

PAVING THE WAY

Chemical Entanglements.....4

EXTENDING OUR REACH

Dishing: A Lecture Series on Food, Feminism, and the Way We Eat.....8
Feminism and the Senses..... 10
Thinking Gender, Imagining Reparations..... 11

MAPPING AND CHARTING OUR IMPACT

CSW's Campus Connections.....12
Co-Sponsorships..... 13

INVESTING IN OUR COMMUNITY

Faculty Research Grants..... 14
Research Excellence Awards for Associate Professors..... 15
Tillie Olsen Grants for Research Affiliates..... 16
Student Awards..... 17

RISING TO THE CHALLENGE

Gender and Everyday Water Use in LA..... 18

THE PEOPLE OF CSW

Faculty and Staff, 2016-2017.....19



ABOUT THE CENTER FOR THE STUDY OF WOMEN

The UCLA Center for the Study of Women is an internationally recognized center for research on gender, sexuality, and women's issues and the first organized research unit of its kind in the University of California system.

Established in 1984, CSW administers research grants for faculty and students; organizes research projects, conferences, seminars, and public lectures; and publishes policy briefs, blogs, and reports.

CHEMICAL ENTANGLEMENTS

SYMPOSIUM

On May 4-5, 2017, CSW gathered an interdisciplinary group of scholars, writers, artists, and activists to inaugurate a series of conversations on the gendered impacts of chemical exposure. Speakers included award-winning environmental journalist **Florence Williams**, noted endocrinologist **Andrea Gore** (Pharmacology and Toxicology, UT Austin), biologist and activist **Tyrone Hayes** (Integrative Biology, UC Berkeley), Native American Studies scholars **Teresa Montoya** (NYU) and **Liza Grandia** (UC Davis), artists **Jesse Cohen** and **Peggy Munson**, and community organizers **Nourbese Flint** (Black Women for Wellness) and **mark! Lopez** (recent winner of the Goldman Environmental Prize). All of their presentations are available on the CSW YouTube channel.



Keynote speaker Florence Williams, panelist Liza Grandia, and CSW Director Rachel Lee

Congratulations on creating a fantastic symposium. The mix of speakers and panelists, from different backgrounds and with very different stories to tell, worked very well. It was inspiring and educational.

- Nancy Wayne, Professor of Physiology, UCLA



A packed house at the symposium keynote

CHEMICAL

A Symposium on
Gender and Exposure

KEYNOTE ADDRESS

THE BURDEN OF BREASTS:
GENDER, CHEMICAL EXPOSURES,
AND CHANGING BODIES

Florence Williams

LA Times Book Award winner for *Breasts: a Natural and Unnatural History* and fellow at the Center for Humans and Nature

May 4, 2017 • 4:00 PM

Conference Room

Charles E. Young Research Library

PANEL DISCUSSIONS

Join researchers, activists, and artists for a series of conversations on environmental and reproductive justice, health, and gendered patterns and effects of chemical exposure.

May 5, 2017 • 8:30 AM-6:00 PM

Popper Theatre,

Schoenberg Music Building

REGISTRATION AND PROGRAM:

csw.ucla.edu/ce

CHEMICAL ENTANGLEMENTS



Chemical Entanglements Symposium poster art

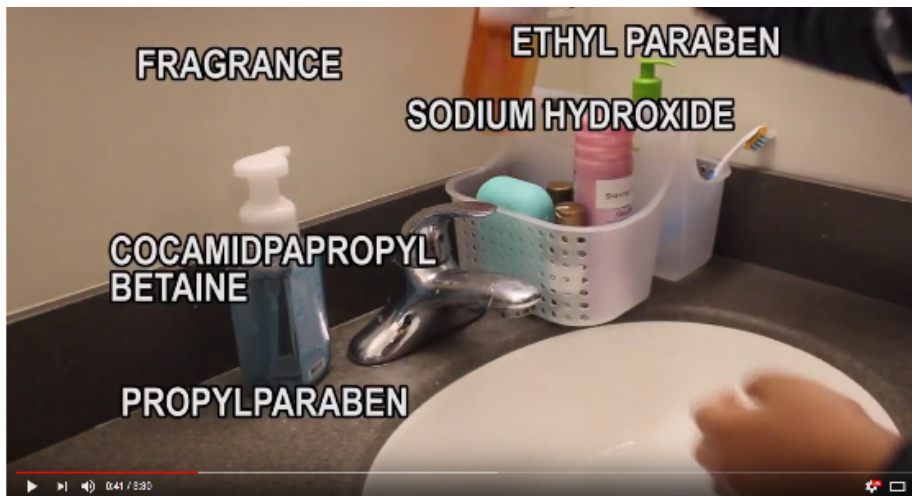


Panelist Teresa Montoya (R) and a symposium guest

I loved the collective conversations forged between thinkers from very different fields. I also liked that everything was so close together, the panels were permeable and you could leave/return when tired or in need of a break. I learned a lot and found a lot of interesting directions in which to push my project thinking.

- Anonymous

PAVING THE WAY:



Still from "A Day in the Life"

UNDERGRADUATE MENTORSHIP

CSW convened an Undergraduate Research Group who produced an original video called "A Day in the Life," which revealed the plethora of chemicals that a typical UCLA undergraduate might encounter throughout the day. Participating students learned research and filmmaking techniques and came from the departments of Gender Studies, Human Biology and Society, and others. The video premiered at the Chemical Entanglements Symposium to rave reviews and was later featured in the Toxics in Everyday Life Symposium hosted by the UCLA Center for Occupational and Environmental Health, one of the co-sponsors of the Chemical Entanglements Symposium. The video is available on the CSW YouTube Channel.

GRADUATE TRAVEL GRANTS

Thanks to our successful fundraising efforts, CSW ensured that the Chemical Entanglements Symposium included scholars and students from diverse disciplines external to UCLA by providing financial assistance to non-UCLA students and independent scholars in financial need. CSW awarded travel grants to eight graduate students from within the UC system, across the country, and as far away as Canada.

Chemical Entanglements Travel Grant Recipients:

Salvador Chava Contreras
Anthropology, UC Santa Cruz

Sophie Duncan
Geography, University of British Columbia

Natalia Duong
Performance Studies, UC Berkeley

Ingrid Elísabet Feeney
Anthropology, UC Santa Barbara

Andrea Ford
Anthropology, University of Chicago

Zachary Levine
Anthropology and Feminist Studies, Duke University

Sindhu Thirumalaisamy
Visual Arts, UC San Diego

Alexa Woodward
Bioethics, Columbia University

I just want to thank you so much for the incredible opportunity you provided me to attend Chemical Entanglements. I learned an unbelievable amount, met incredible people, and have so many new scientific and political lenses with which to look at the world. What an incredible conference and thank you for all of your hard work to make it happen.

- Sophie Duncan, Travel Grant Recipient

CHEMICAL ENTANGLEMENTS

JUST SO YOU KNOW...

- Your hair dye is the wrong battle cry
- Your aftershave post-stubble makes me live in a bubble
- Your perfume is a toxic plume
- Modern people have “the vapors” from chemical capers
- That battle-ax spray took my access away



PUBLICATIONS AND ART

As part of Chemical Entanglements, CSW published a series of four Policy Briefs. 300 copies of these briefs were distributed to research centers, community organizations, and legislators. In addition, we curated and published a blog featuring student, activist, and researcher work related to Chemical Entanglements.

We also commissioned original artwork. Through a collaboration with activist and artist Peggy Munson, who herself experiences environmental illness, we created original artwork drawing attention to Multiple Chemical Sensitivity. We distribute and display prints of this work at our events.

JUST SO YOU KNOW...

- You're wearing a toxic dump from a pump
- Reduce your emissions: ask for permission
- Your aftershave post-stubble makes me live in a bubble
- You might re-think your de-stink
- That battle-ax spray took my access away



JUST SO YOU KNOW...

Your perfume sent me to the waiting room

Chem industry skills are making us ill

What sounds aromatic may be diabolic

You might re-think your de-stink

My symptoms grow urgent around scented detergent



Chemical Entanglements artwork by Peggy Munson

EXTENDING OUR REACH:



The talks in this pioneering food-themed lecture series explored how the way we eat is fundamentally tied to the way we think about gender. Long-held stereotypes about food – from the notion that the kitchen is the domain of women to the idea that eating red meat is masculine – impact the food choices that people make and determine the way families and organizations divide food-related labor. These assumptions about food and gender also shape the social interactions we engage in at dining tables, in markets, in kitchens, at restaurants, on farms, in factories, and anywhere that food is produced or consumed.



Rachel Vaughn discusses gender and food waste



Diana Garvin speaks on food and fascism

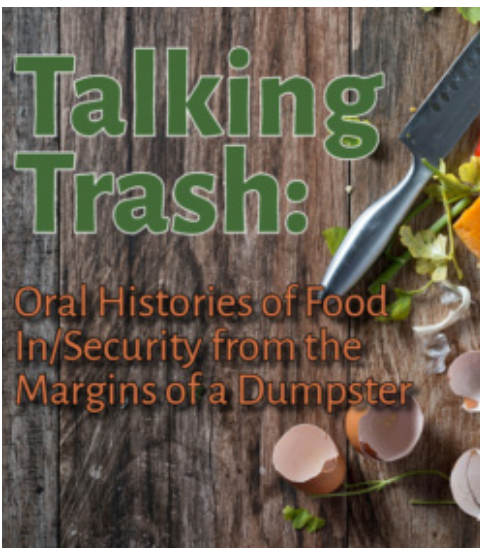


Respondent Camille Frazier discusses umami with Sarah Tracy



CSW Manager Kristina Magpayo Nyden at the umami-tasting buffet

DISHING: A LECTURE SERIES ON FOOD, FEMINISM, AND THE WAY WE EAT

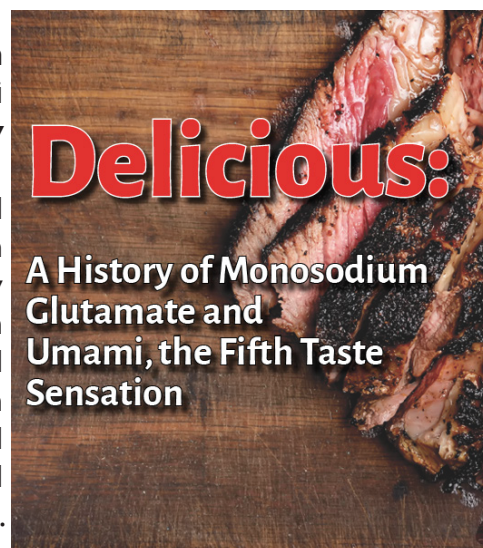


Talking Trash: Oral Histories of Food In/Security from the Margins of a Dumpster *featuring Rachel Vaughn*

On October 26, 2016, Rachel Vaughn, Adjunct Assistant Professor in CSW and Gender Studies, shared her oral history research with scavengers, foragers, and dumpster divers of varying food security levels and socioeconomic backgrounds. She explored how the space of the dumpster and the act of diving work as alternative forms of cultural knowledge about food. The event was held in conjunction with UCLA's Healthy Campus Initiative Food Week and included a "Fighting Hunger Fair" tabling event comprised of UCLA and LA food organizations.

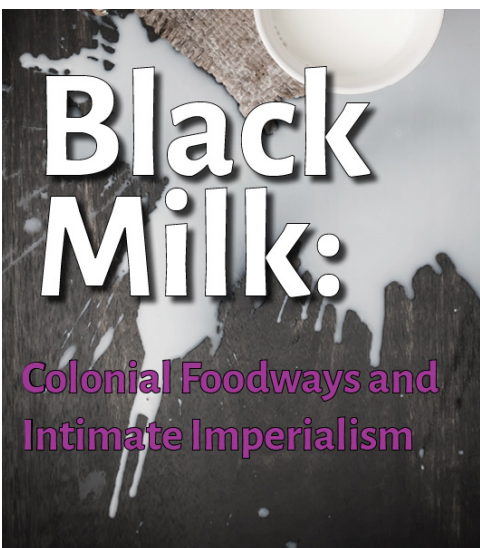
Delicious: A History of Monosodium Glutamate and the Fifth Taste Sensation, Umami *featuring Sarah Tracy*

On November 29, 2016, Sarah Tracy, Adjunct Assistant Professor in CSW and Institute for Society and Genetics, discussed how her work uses approaches from feminist science and technology studies to examine the cultural and social history of the way that people eat. Her talk drew upon her current book project, which will explore the gendered, racial, and chemical history of MSG, the concept and flavor known as umami, and the gendered moral economies of food provision and preparation. The event incorporated an umami tasting buffet, which invited attendees to taste different foods that were rich in umami flavor. Tracy also guided attendees through a tasting of one of the most umami-rich foods available: Doritos.



Black Milk: Colonial Foodways and Intimate Imperialism *featuring Diana Garvin*

On April 6, 2017, Diana Garvin, Assistant Professor of Italian at the University of Oregon, delivered a talk that used original Italian and Ethiopian sources to examine breastfeeding in the colonial marketplace as a key plank in the social construction of race and racism in the colonies. Specifically, she examined the Italian Fascist regime's propagandistic newsreels and unpublished photographs of Ethiopian markets in Addis Ababa, Harrar, Quorum, and Asmara in relation with postcolonial oral histories and architectural studies of these spaces.



FEMINISM AND THE SENSES: TESTING TAMPONS

Feminism and the Senses: Sense Data and Sensitivity in an Age of Precarity is a lecture series that addresses how social movements around gender, sexuality, and race have a crucial relationship to sentimentality and sensitivity, and how our senses can teach us about gender inequality in everyday life.

Women who speak out against injustices are often dismissed as “too sensitive.” However, the research presented in this lecture series demonstrates that the senses and perceptions of women reveal how sexism and inequality affect individuals on a daily basis, and therefore need to be taken seriously. In a world where reports of everyday gender-based discrimination and harassment are often ignored, the way that such circumstances make individuals feel is a powerful indicator of how inequality is perpetuated. Moreover, our physical senses also tell us when something is awry. Our bodies respond to discrimination through illness or physical manifestations of stress. And when individuals lack access to basic needs due to discrimination, they often experience negative health effects.

Feminism and the Senses explores these dynamics from a wide range of perspectives. During 2015-2016, the inaugural year of the lecture series, speakers addressed topics ranging from gender and hunger strikes in prisons, to black feminist uses of sound and music, to the way feminist approaches can change perceptions of the environment. In 2016-2017, our *Feminism and the Senses* speaker Sharra Vostral tied this ongoing conversation to the ways that women’s senses and perceptions of their bodies have played a role in feminist health advocacy.



Feminism and the Senses speaker Sharra Vostral

ucla center for the study of women
research that rethinks • csw.ucla.edu All CSW events are fragrance-free!
Learn more: sharetheair.ucla.edu

TESTING TAMPONS

Toxic Shock Syndrome, Feminist Advocates, and Absorbency Standards

Sharra Vostral
Associate Professor, History, Purdue University

During the 1980s in the aftermath of Toxic Shock Syndrome (TSS), the Centers for Disease Control recommended that women use the least absorbent tampons possible, yet manufacturers did not label boxes with reliable information. This talk examines the establishment of the Tampon Task Force, the contested “syngina” synthetic vagina lab apparatus to test tampon absorbency, and the regulation of female-specific tampon technologies. The legacy of these efforts is the standardization of absorbency ratings as well as product labeling, and evidence of the importance of feminist health activists’ involvement within policy negotiations.

Part of **FEMINISM + THE SENSES: Sensitivity and Sense Data in an Age of Precarity**

February 23, 4:00 PM
Kerckhoff Grand Salon
RSVP online: csw.ucla.edu/vostral

Co-sponsors:
Bixby Center on Population and Reproductive Health
Institute for Society and Genetics

Testing Tampons poster art

Testing Tampons: Toxic Shock Syndrome, Feminist Advocates, and Absorbency Standards

On February 23, 2017, we welcomed our 2017 *Feminism and the Senses* speaker **Sharra Vostral, Associate Professor of History at Purdue University**. Vostral is the author of *Under Wraps: A History of Menstrual Hygiene Technology*, which examines the social and technological history of sanitary napkins and tampons. Her *Feminism and the Senses* talk drew on her newest research project and examined the establishment of the Tampon Task Force, the development of the contested “syngina” synthetic vagina lab apparatus to test tampon absorbency, and the regulation of female-specific tampon technologies. The legacy of these efforts is the standardization of absorbency ratings and product labeling, and is evidence of the importance of feminist health activists’ involvement within policy negotiations.

THINKING GENDER, IMAGINING REPARATIONS



Thinking Gender poster art

2017 marked the 27th year of CSW's Thinking Gender Graduate Student Research Conference, an annual event that showcases the best research by emerging scholars of gender and sexuality. The 2017 conference took place on February 9-10 and focused on the theme "Imagining Reparations." Each year, the Thinking Gender Conference is coordinated by a UCLA graduate student. Our 2017 Thinking Gender Coordinator was Winter Rae Schneider, a PhD Candidate in the Department of History.

Highlights of the 2017 Thinking Gender conference included:

Plenary Session with Omise'eke Natasha Tinsley

For the opening session of the conference, CSW hosted Omise'eke Natasha Tinsley, Professor of African and African Diaspora Studies at University of Texas at Austin, who gave a talk titled "For the Texas Bama Femme: a Black Fem(me)inist Reading of Beyoncé's 'Sorry,'" which examined the politics of Beyoncé's performances of gender and race. Shana Redmond, UCLA Associate Professor of Musicology, served as respondent.

2016-2017 annual report

Multimedia Salon

The Multimedia Salon was a first for Thinking Gender, and it incorporated film screenings, performances, visual art, and poster presentations by graduate and undergraduate students. Sean Metzger, UCLA Associate Professor of Theater, Film, and Television, was the emcee for this event, and members of the UCLA Social Justice Advocates, a UCLA group that teaches and engages peers about issues of diversity and social justice, assisted as moderators.

Plenary Workshop with Nalo Hopkinson

Departing from the traditional lecture format, the second conference plenary was an interactive workshop led by noted novelist and UC Riverside Professor of Creative Writing Nalo Hopkinson. The workshop, "Re-Writing the World," led participants through the process of creating their own feminist science fiction stories.

Workshop with the Undercommons

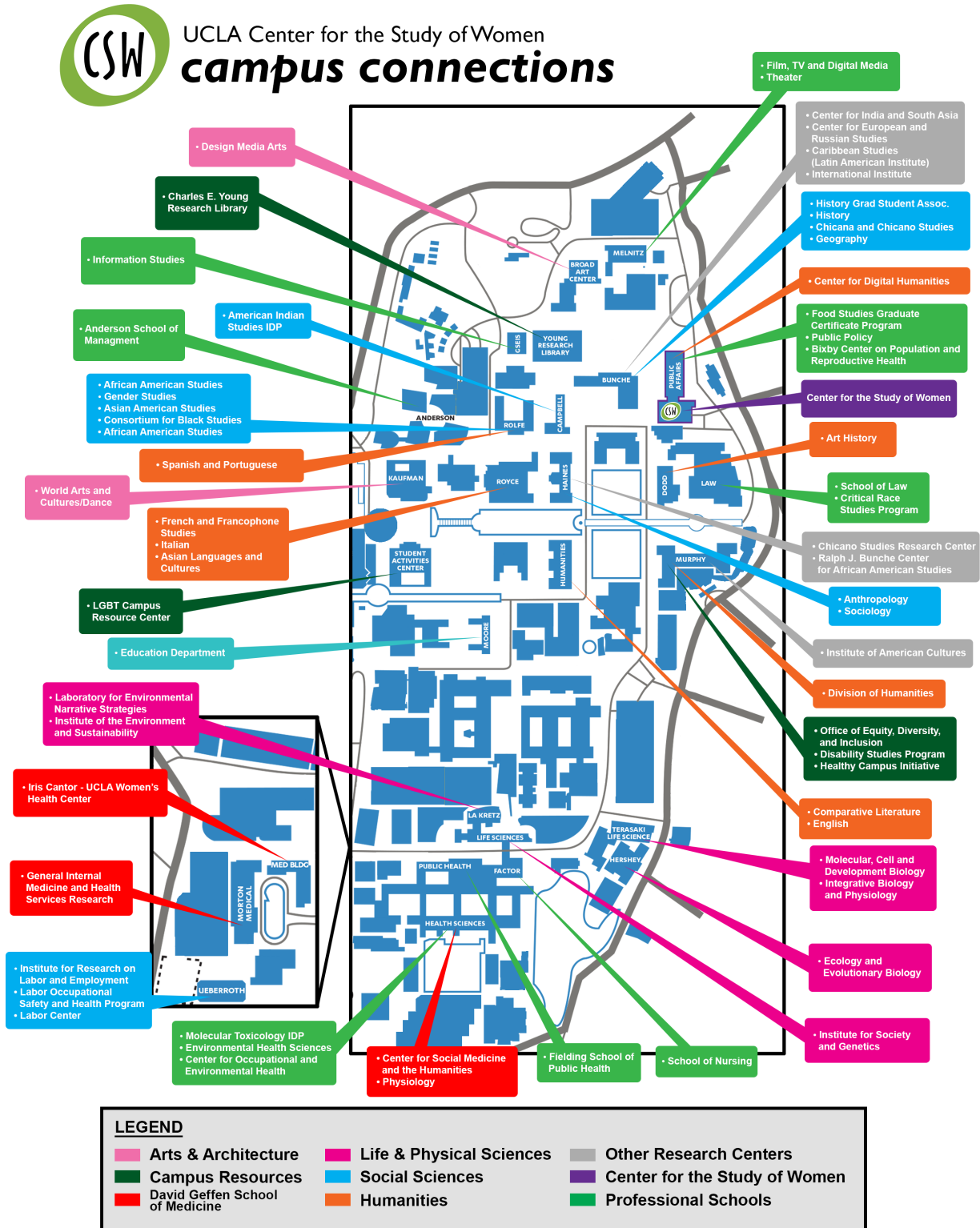
The Undercommons, a graduate student activist collective, led a session that drew on the spirit of the plenary workshop and conference theme by inviting participants to imagine and create their own "Freedom Manifestos."



Conference participants crafting Freedom Manifestos

MAPPING AND CHA

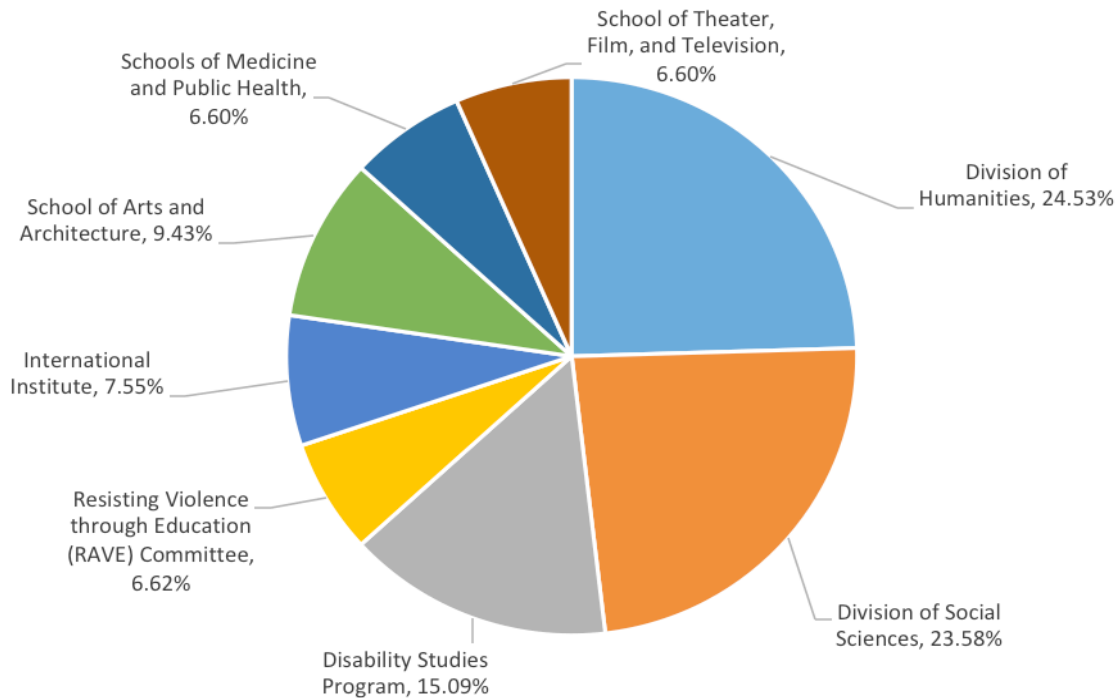
CSW cultivates connections with Departments and Centers across campus. Our faculty and staff affiliates, student awardees and staff members, working group members, event co-sponsors, and other partners come from the units illustrated below and beyond!



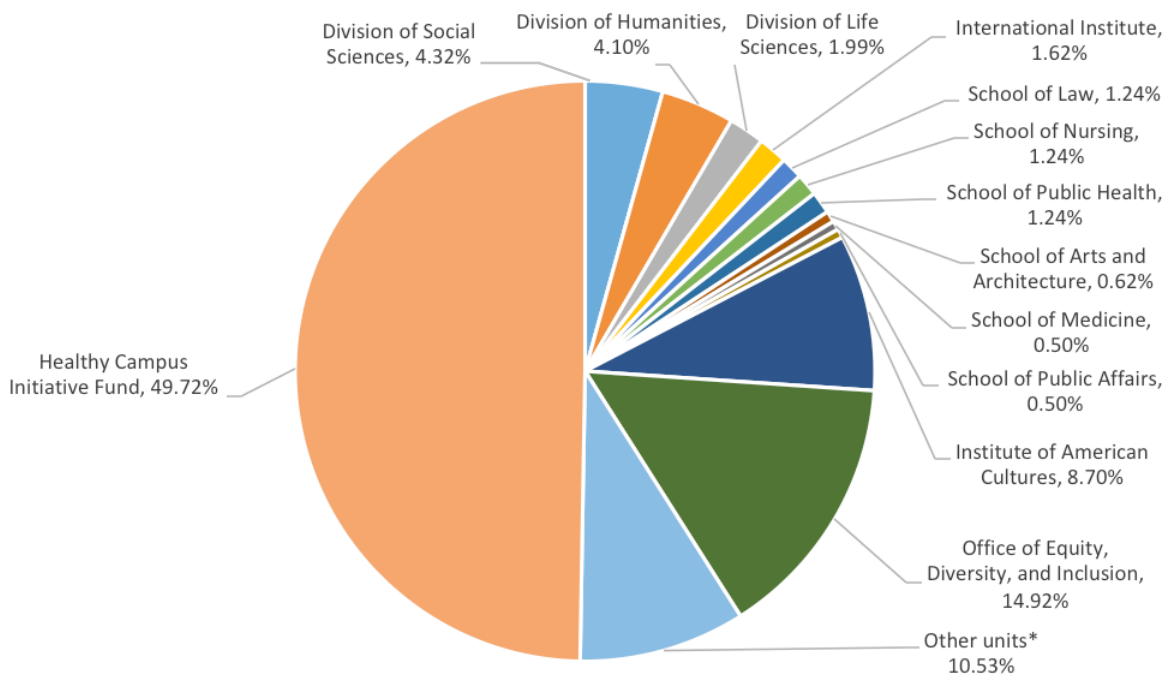
REPORTING OUR IMPACT

CSW partners with Departments and Centers across campus by co-sponsoring programs and events through financial support, publicity and promotion, and other forms of support. We also pursue such partnerships in support of our own events and programs. Our co-sponsorships have led to collaborations across all divisions of the university.

Co-Sponsorship funds distributed by CSW, by UCLA Division



Co-Sponsorship funds received by CSW, by UCLA Division



*Estrin Family Lecture Series Fund, Iris Cantor - UCLA Women's Health Center; Laboratory for Environmental Narrative Strategies, Environmental Health Sciences, Center for Occupational and Environmental Health, Disability Studies Program

INVESTING IN OUR COMMUNITY: FACULTY RESEARCH GRANTS

Every year, CSW offers grants to UCLA faculty for research development. In 2016-2017, three faculty recipients made significant strides on their research projects with the use of these grants:



Jessica Gipson, Associate Professor of Community Health Sciences, received the Faculty Seed Research Grant for her project, *Examining Health and Well-Being among Nomadic Tibetan Women in Rural China*.

Gipson writes: “Thanks to the Center for the Study of Women grant and contributions from other sources, a team of us from the UCLA School of Public Health traveled to the Tso-ngon Tibetan Medical College (TTMC) in Siling, Tibet (Xining, China) in September 2016. We are currently analyzing the [collected] data, [which] will be used by our colleagues to identify the most pressing health issues and to develop health interventions among this hard-to-reach, nomadic population.”



Kristy Guevara-Flanagan, Associate Professor of Theater, Film, and Television, received the Junior Faculty Research Grant for the research and development of a short documentary titled *The Birth Control Handbook*.

The film explores a little-known moment in time that marked the birth of a student-fueled reproductive health advocacy project: a self-published zine with

accurate and practical information about sex, birth control, and abortion that was circulated to colleges throughout Canada and the United States. Though few people know of it today, *The Birth Control Handbook* became a blueprint for the more famous and influential *Our Bodies Ourselves*. Using the grant, Guevara-Flanagan began collaborating with an animator, and together they have developed strategies for visual approaches and for incorporating archival source materials.



Saloni Mathur, Professor of Art History, received the Faculty Research Completion Grant for her project, *Reading Geeta Kapur: Art Criticism in India*.

Mathur writes: “I received a grant from CSW in 2016-2017 to support my forthcoming manuscript, *A Fragile Inheritance: Radical Stakes in Contemporary Indian Art*. *A Fragile Inheritance* is the first book-length examination of two seminal figures in contemporary Indian art: Vivan Sundaram, the veteran Delhi-based artist, and Geeta Kapur, the pre-eminent theorist, critic, and curator, and most significant interlocutor of the post-1968 avant-garde generation to which Sundaram belongs. It promises to advance the conceptual and theoretical paradigms of the emergent field of global contemporary art.”

Help CSW Support Students and Researchers!

Our fellowships, awards, and grants are generously supported by friends of CSW. Visit csw.ucla.edu to learn how you can donate and support groundbreaking research on women, gender, and sexuality.

RESEARCH EXCELLENCE AWARDS FOR ASSOCIATE PROFESSORS

The new Research Excellence Award for Associate Professors offers awardees a unique opportunity: the chance to have a book manuscript-in-progress read and responded to by peers and distinguished researchers.

Developed by CSW and the UCLA Institute for American Cultures (IAC), this award recognizes UCLA associate professors whose work addresses questions important to the fields of critical race and postcolonial studies and/or gender, sexuality, and ethnic studies.



Namhee Lee,
Asian Languages & Cultures
Afterlives of the 1980s: The Culture Wars and the Triumphant Discourse in South Korea



Elizabeth Marchant,
Gender Studies
Consuming Blackness in Brazil: Memories of Slavery and the Emergence of Neoliberal Repression



In 2016-2017, an inaugural pilot workshop took place on May 26, 2017, featuring Associate Professor of Chicano/a Studies **Maylei Blackwell's** manuscript tentatively entitled *Scales of Resistance: The Practice of Indigenous Autonomy in the Age of Neoliberalism*.



Thu-huong Nguyen-vo,
Asian Languages & Cultures
States of Disturbance: Responses to the Economics and Politics of Death

For 2017-2018, IAC and CSW originally planned to fund two workshops via an application process. However, after receiving seven impressive and deserving applications, CSWAC Chair and Selection Committee Chair Grace Hong raised the funds for **five additional workshops**, three from the Division of Social Sciences and two from the Division of Humanities. The seven recipients are:



Shana Redmond, Musicology
Everything Man: The Form and Function of Paul Robeson



Shannon Speed, Gender Studies
States of Violence: Indigenous Women Migrants in the Era of Neoliberal Multicriminalism



Jessica Cattelino, Anthropology
Unsettling Nature: An Everglades Ethnography



Mishuana Goeman, Gender Studies
The New World (2005): The Spectacle of Originary Moments



CSW looks forward to future collaborations with IAC!

TILLIE OLSEN GRANTS FOR RESEARCH AFFILIATES

Independent scholars make crucial contributions to research, and yet are undersupported and often lack access to key research resources. Through the Research Affiliate program, CSW assists independent scholars in the Los Angeles region by providing access to selected research resources and the opportunity to apply for funding.

Funded by Dr. Pat Zukow, the Tillie Olsen Grants honor the memory of a writer who documented the silences imposed on women by family and work responsibilities and financial need. They support exceptional research and projects by CSW Research Affiliates.

In 2016-2017, CSW awarded three Tillie Olsen Grants:



Kristine Gunnell studies the history of the United States, and, in particular, the role of religious women in public and private life. The grant provided support for her project *Fighting Poverty One by One: The Daughters of Charity Foundation and Systemic Change, 1984-2015*. This study will reveal how the sisters of the Daughters

of Charity have sought to ameliorate the effects of poverty. This interdisciplinary project will examine how women's religious organizations have negotiated the complex systems that prevent economic betterment.



Becky Nicolaides received a grant in support of *On the Ground in Suburbia: A Chronicle of Social and Civic Transformation in Los Angeles since 1945*. This book project explores how patterns of social and civic engagement have changed in

suburban communities since 1945, with a particular focus on the Los Angeles communities of Lakewood, Panorama City, Lancaster, South Gate, and others. Nicolaides has chosen case studies that reveal the myriad of ways in which race, immigration, gender, and other demographic factors shape social and civic culture in the suburbs.



In 2016, **Kathleen Sheldon** published her landmark book *African Women: From Early History to the 21st Century*, the first comprehensive textbook on the topic of African women's history. She completed this project as an independent scholar without formal institutional support. CSW

awarded her a grant to travel to the Berkshire Conference on Women in History, where she spoke of both the challenge of researching women's often-undocumented histories and of the challenges of being a woman historian and independent scholar.

Tillie Lerner Olsen, 1912-2007



Tillie Olsen was the author of short stories such as "I Stand Here Ironing" and "Tell Me a Riddle." She also served as an advisor to The Feminist Press.

STUDENT AWARDS: SUPPORTING THE NEXT GENERATION OF RESEARCHERS

CSW offers fellowships and awards to exceptional UCLA Graduate and Undergraduate students. We see this as an investment in the next generation of researchers. We honored our student awardees at a luncheon on May 31, 2017.

Katherine Spillar, Executive Director of the Feminist Majority Foundation and Executive Editor of *Ms. Magazine*, delivered a keynote address entitled “Rise Up! Feminism in the Age of Trump,” where she shared lessons and strategies from the field to inform and inspire the community in the current political climate. CSW bestowed Spillar with the inaugural CSW Leaders Award for her commitment, leadership, and contributions to the feminist community.



Congratulations to our 2016-2017 cohort of CSW Award Winners:

Constance Coiner Awards

These awards honor the life and helps continue the work of Constance Coiner, Ph.D. 1987, who died, along with her daughter Ana Duarte-Coiner, on TWA Flight 800, June 1996.

Kimberly Welch (Graduate Award)
Linda Esquivel (Undergraduate Award)
Kelly Gluckman (Undergraduate Award)

Renaissance Awards

This scholarship, made possible through the generous donation of Dr. Myrna Hant, rewards the rebirth of academic aspirations among women whose college careers were interrupted or delayed by family and/or career obligations.

Denise Phelps
Paula Rodriguez-Diaz

Elizabeth Blackwell, MD, Graduate Award

This award recognizes research related to women and health. It was made possible by the generosity of Dr. Barbara “Penny” Kanner.

Eleni Skaperdas

Penny Kanner Dissertation Research Fellowship

Made possible through the generosity of Dr. Barbara “Penny” Kanner, this fellowship funds an exceptional dissertation research project that uses historical materials and methods.

Savannah J. Kilner

Jean Stone Dissertation Research Fellowship

Made possible through the generosity of Mrs. Jean Stone, this fellowship funds an exceptional graduate student dissertation research project focusing on women and gender.

Jacqueline (Jackie) Caraves

Paula Stone Legal Research Fellowship

This award funds research focusing on women in the criminal/legal justice system. It is made possible through the generosity of Mrs. Jean Stone to honor her daughter, Paula Stone.

Elle Harvell

Policy Brief Prizes

The CSW Policy Brief Prize supports applied feminist scholarship by graduate students at UCLA.

Teniopé Adewumi-Gunn
Melissa Kelley
Theresa Arriola (Honorable Mention)

Travel Grants

Travel Grants assist UCLA students with travel expenses related to academic or professional conference presentations and field research on women, gender, and sexuality.

Megan Baker
Jennifer Blaney
Elizabeth Dayton
Rocío García
Bianca Haro
Carla Kekejian
Domale Keys
Natalia Konstantinovskaia
Stephanie Lumsden
Monique Magdaleno
Sayantan Mukhopadhyay
Tiffany Naiman
Diana Porras
Shena Sanchez
Wakako Suzuki
Emily Taing

RISING TO THE CHALLENGE: GENDER AND EVERYDAY WATER USE IN LA



The “Gender and Everyday Water Use in Los Angeles Households” study was awarded a **UCLA Sustainable Los Angeles Grand Challenge Grant in February 2016**. This groundbreaking study investigates the important but understudied role of gender – as it intersects with race and class – in residential water use in LA.



CSW Associate Director
Jessica Cattelino

Many much-needed LA water conservation efforts take place within households, where research has shown that divisions of labor and decision-making often are gendered. This research incorporates mixed methods, with emphasis on ethnography, to identify patterns in water perceptions and practices that are vital to efforts at change. The primary research question

of this study is: Is household water use gendered in LA and, if so, how? Secondary questions include: To what extent and how are gendered water use

and valuation diversified by class and race? How do households make day-to-day decisions about water conservation? How are parents guiding the current generation of “drought children” to think about and use water? Do accepted methods for targeting reduction in household water use produce uneven or unjust effects for different groups?

Over the last year, CSW Associate Director and Principal Investigator Jessica Cattelino has worked with a team of graduate students – and, over the summer, undergraduate researchers – to complete a review of the scholarly literature, design the research methods and plan, select target neighborhoods (Koreatown, MacArthur Park, Inglewood, and Beverly Hills), and complete the UCLA approval process for research with human subjects.

Finally, in Summer 2017, the fieldwork began! Research teams are recruiting participants and visiting their homes for a combination of interviews, observations, and water use assessments that incorporate water diaries. Findings are expected to yield recommendations for reductions in residential water use as well as scholarly articles.

THE PEOPLE OF CSW FACULTY AND STAFF, 2016-2017

Faculty



Rachel C. Lee
Director



Jessica Cattelino
Associate Director



Sarah Tracy
Adjunct Assistant
Professor



Rachel Vaughn
Adjunct Assistant
Professor



Grace Hong
Advisory Committee
Chair

Staff



**Kristina
Magpayo Nyden**
Management
Services Officer



Alexandra Apolloni
Program Coordinator



Melissa Jamero
Administrative Specialist

Graduate Student Researchers



Gracen Brilmyer



Rachel Connolly



Jana Gowan



Winter Rae Schneider

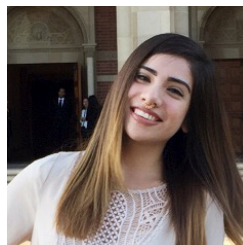
Undergraduate Assistants



Arielle Bagood



Grace Diaz



Yesenia Rodriguez



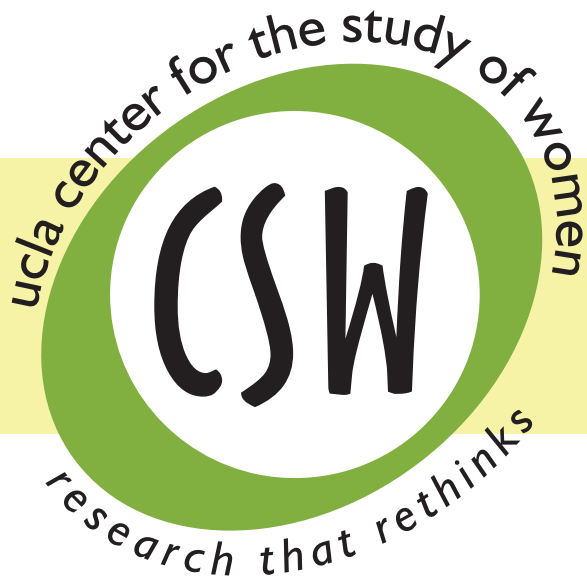
Tiffany Uribe



Anne Villegas



Haley Williams



csw@csw.ucla.edu • csw.ucla.edu
box 957222 • public affairs 1500
los angeles, ca 90095-7222
campus: 722203
<http://csw.ucla.edu>

Connect with CSW!

Read our research on **eScholarship**: <https://escholarship.org/uc/CSW>
Watch our talks on **YouTube**: <https://www.youtube.com/user/UCLACSW>
Follow and Like us on **Facebook**: <https://www.facebook.com/UCLACSW>
Follow us on **Twitter**: https://twitter.com/UCLA_CSU



Read the full 2016-2017 CSW Annual Report and reports from past academic years at
<https://csw.ucla.edu/publications/csw-annual-reports/>